

US6—Surface Mounted Toilet Tissue Holder, Concealed Mount.

Fabricated of type 304 #14 gauge stainless steel.
Overall Size: 4¾"W x 8"H x 2¾"D

US7—Same as above with exposed mounting.

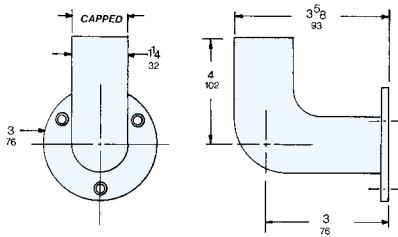
US8—Surface Mounted Toothbrush Holder, Concealed Mount.

Fabricated of type 304 #7 gauge stainless steel, single piece construction. Has a capacity to hold 4 brushes.
Overall Size: 5"W x 2¼"H x 2¼"D

US9—Same as above with exposed mount.

US10—Recessed Tumbler Holder. Fabricated of type 304 #16 gauge stainless steel satin finish. Drawn, one-piece seamless construction.
Overall Size: 5"W x 7"H x 2¾"D

Wall Opening: 3⅞"W x 5⅞"H x 3"D min.



US11

US11—Surface Mounted Toilet Tissue Holder. Tube is fabricated of Type 304 #18 gauge stainless steel, 1¼" diameter with a welded capped end. Flange is fabricated of type 304 #11 gauge (3" dia.) stainless steel with 3 exposed countersunk holes.
Overall Size: 5½"H x 3⅞"D

US15—Surface Mounted Security Shelf with Toothbrush Slots. Shelf is fabricated of type 304 #14 gauge stainless steel with a capacity to hold 4 toothbrushes.
Overall Size: 18"W X 2⅞"H x 4"D



US22

US21—Surface Mounted Soap Dish with Drain Holes, Concealed Mounting. Dish is fabricated of type 304 #7 gauge stainless steel, formed from a single piece of steel. Unit is equipped with 3 drain holes.
Overall Size: 5"W X 2¼"H x 2¼"D

US22— Same as above with exposed mounting.

U931: Heavy Duty Recessed Shower Seat. See page 18 for details.

Security Fasteners: Security type fasteners are available on request. Type wall application, length of fastener required and type headstyle must be supplied to order proper fasteners.



US17

US19

US17—Collapsible Hook. Bracket is fabricated of type 304 #11 gauge stainless steel. Hook is fabricated of type 304 #7 gauge stainless steel. Friction washers and tamper resistant spanner screw, adjust the amount of the tension required for hook to collapse.
Overall Size: 1"W x 4⅞"H x 3"D

US18—Surface Mounted Collapsible Hook, Concealed Mounting. Hook is fabricated of type 304 #14 gauge stainless steel. All seams are tig welded and ground smooth. Pivoting balljoint releases when excessive force is applied.
Overall Size: 4"W x 4"H x 2¼"D

US19—Same as above with exposed mounting.



US74

US74—Recessed Round Security Toilet Tissue Holder. Item is fabricated of type 304 #16 gauge stainless steel, drawn one-piece construction. Rim of holder is beveled to ensure a tight fit to wall.

Overall Size: 6¼"Dia. x 4⅞"D
Wall Opening: 5¾"Dia. x 4¾"D



US80

US80—Recessed Soap Dish. Unit is fabricated of type 304 #16 gauge stainless steel, drawn one-piece seamless construction. Outer edge has beveled edge to ensure a tight fit to wall.

Overall Size: 7"W X 5"H x 2¾"D
Wall Opening: 5⅞"W X 3⅞"H x 2¾"D



US130

US130—Security Grab Bar. Bars are fabricated of type 304, 1½" dia. #18 gauge stainless steel with a #4 satin finish. Flanges are fabricated of type 304 #11 gauge stainless steel with 3 exposed mounting points. Closure plate is fabricated of type 304 #11 gauge stainless steel, welded in place to prevent injury and to conceal contraband.

*Standard Bar Sizes: 12", 18", 24", 30", 36", 42" & 48"
 * US130 grab bar is designed for horizontal mounting.



US7408B

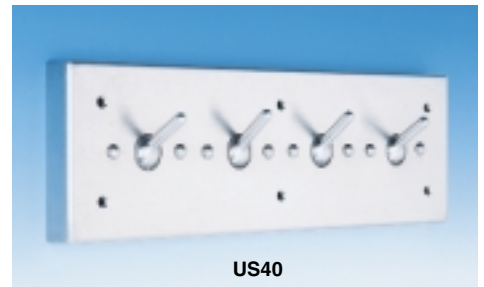
US7408B—Stainless Steel Mirror. Mirror with integral frame is fabricated of type 304 18-8 #20 gauge stainless steel with #8 architectural bright finish. Frame has countersunk holes for mounting.

Overall Size: 11¼"W x 17¼"H

US7010P—Security Mirror with Concealed Fasteners. Frame is fabricated of type 304 18-8 #14 gauge stainless steel with all exposed surfaces with a #4 satin finish. Mirror is fabricated of ¼" thick plexiglass with high reflective qualities. Back of frame has welded anchor nuts.

Overall Size: 12"W x 16"H x 5/8"D
 *Other sizes available on request

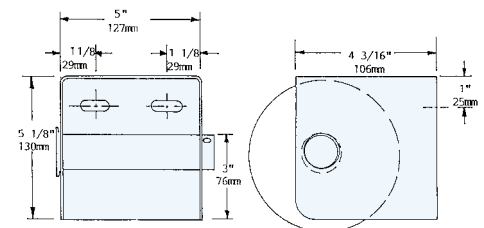
UNIT	TYPE MOUNTING	MIRROR SURFACE
US7010P	Concealed	¼" Plexiglass
US7010S	Concealed	#430 Stainless Steel
US7010T	Concealed	Tempered Glass
US7011P	Exposed	¼" Plexiglass
US7011S	Exposed	#430 Stainless Steel
US7011T	Exposed	Tempered Glass



US40

US40—Surface Mounted Collapsible Hook Strip—Face plate is fabricated of type 304 #14 gauge stainless steel with 4 pivoting ball joint collapsible hooks. Ideal for installation in areas of security/ safety to patients or detainees.

Overall Size: 18"W x 5½"H x 7/8"D



US888

US888: Surface Mounted Security Toilet Tissue Holder—Unit is fabricated of type 304 #18 ga. stainless steel with a #4 satin finish on all exposed surfaces. 1¼" dia. 18 ga. stainless steel tube acts as spindle with one end flared to prevent removal from cabinet. The other end of tube has two holes drilled to accommodate pad lock. **(Pad lock not included)**

Overall Size: 5"W x 5⅞"H x 4⅞"D
Capacity: One standard size roll.

US889: Same as US888 with two rolls in lieu of one roll of toilet tissue. **(Pad lock not included)**

Overall Size: 10⅞"W X 5⅞"H x 4⅞"D
Capacity: Two standard size rolls.