

DIMENSIONS OF ADULT SIZE WHEELCHAIRS

ANSI & ADAAG GUIDELINES

The landmark Americans with Disabilities Act (ADA CODE) enacted on July 26, 1990, provides comprehensive civil rights protections to individuals with disabilities in the areas of employment, public accommodations, state and local government services and telecommunications. This rule prohibits discrimination on the basis of disability by private entities in places of public accommodation, requires that all new places of public accommodations and commercial facilities be designed and constructed so as to be readily accessible to and usable by persons with disabilities. ****CHECK ALL STATE CODES FOR PROPER MOUNTING LOCATIONS, HEIGHTS AND ANY LOCAL VARIANCES.**

FEDERAL REGISTER FOR ADA CODE COMPLIANCE (BARRIER FREE)

4.27.4 - OPERATION: Controls and other operating mechanisms shall be operable with one hand and shall not require tight grasping or twisting of wrist. The force req. to activate controls shall not be greater than 5 lbs. (22.n)

4.19.6 - MIRRORS: Bottom edge of reflective surface, cannot be mounted at a height, no higher than 40" above finished floor. If mirrors are to be used by both ambulatory and wheelchair users, mirrors must be at least 74" (1880mm) high at their highest edge. A single full length mirror can accommodate all people including children.

4.23.9 - MEDICINE CABINETS: If provided, one must be located with a usable shelf no higher than 44" above finished floor.

4.16 - TOILET PAPER DISPENSER: Any dispenser that must comply with ADA CODE cannot have any type of controlled delivery.

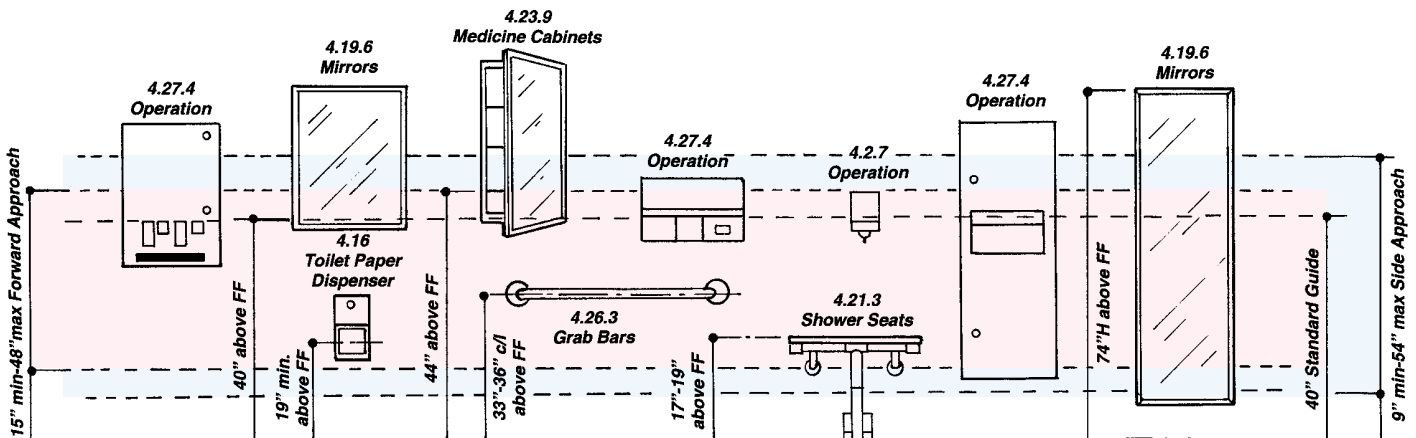
4.21.3 - SHOWER SEATS: Seating area of shower seat should be at a height between 17" - 19" above finished floor. *(Recommend in wall mounting)

4.20.3, 4.26.3 - TUB SEATS: Seats should be mounted to wall surface securely and shall not slip during use. *(Recommend in wall mounting)

4.26.2- GRAB BARS: Diameter of gripping surface shall be 1 1/4" - 1 1/2" diameter.(32mm - 38mm) The space between wall and grab bar (offset) shall be no greater than 1 1/2" (38mm) Recommend 33"-36" centerline above finished floor. *(Recommend in wall mounting) Verify if non-slip grip is required per local codes.

4.30.2,4.30.3,4.30.4,4.305,4.30.6,4.30.7- SIGNAGE: Requires picto-grams and Braille indicators on signage with contrasting colors mounted at a height of 60" above finished floor.

| FORWARD REACH | SIDE REACH | COMBINED REACH |
|--------------------------------|-------------------------------|----------------|
| Max:48"(1220mm) Min:15"(380mm) | Max:54"(1307mm) Min:9"(230mm) | |



Consult all "Local Codes" for compliance before installation.